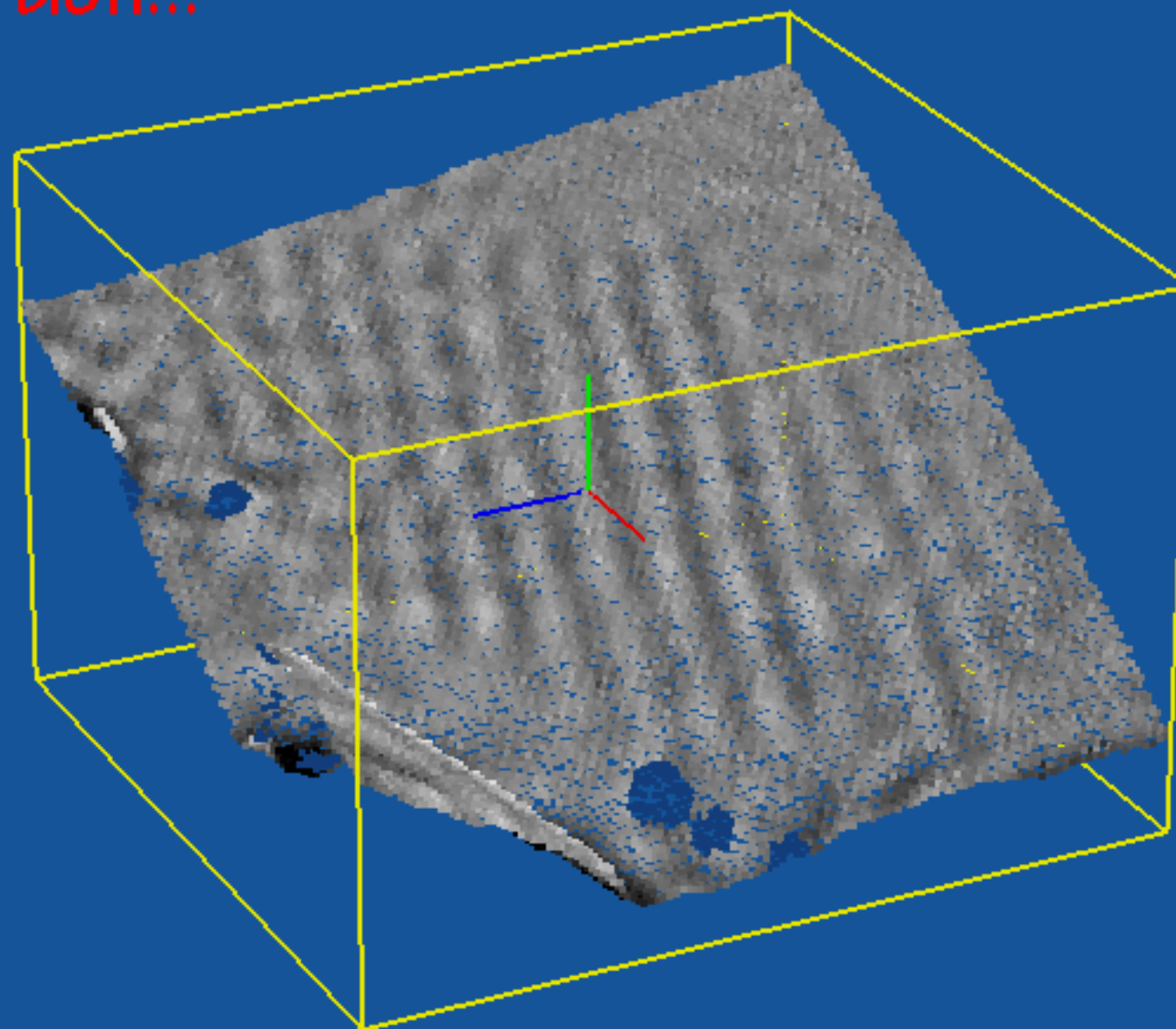


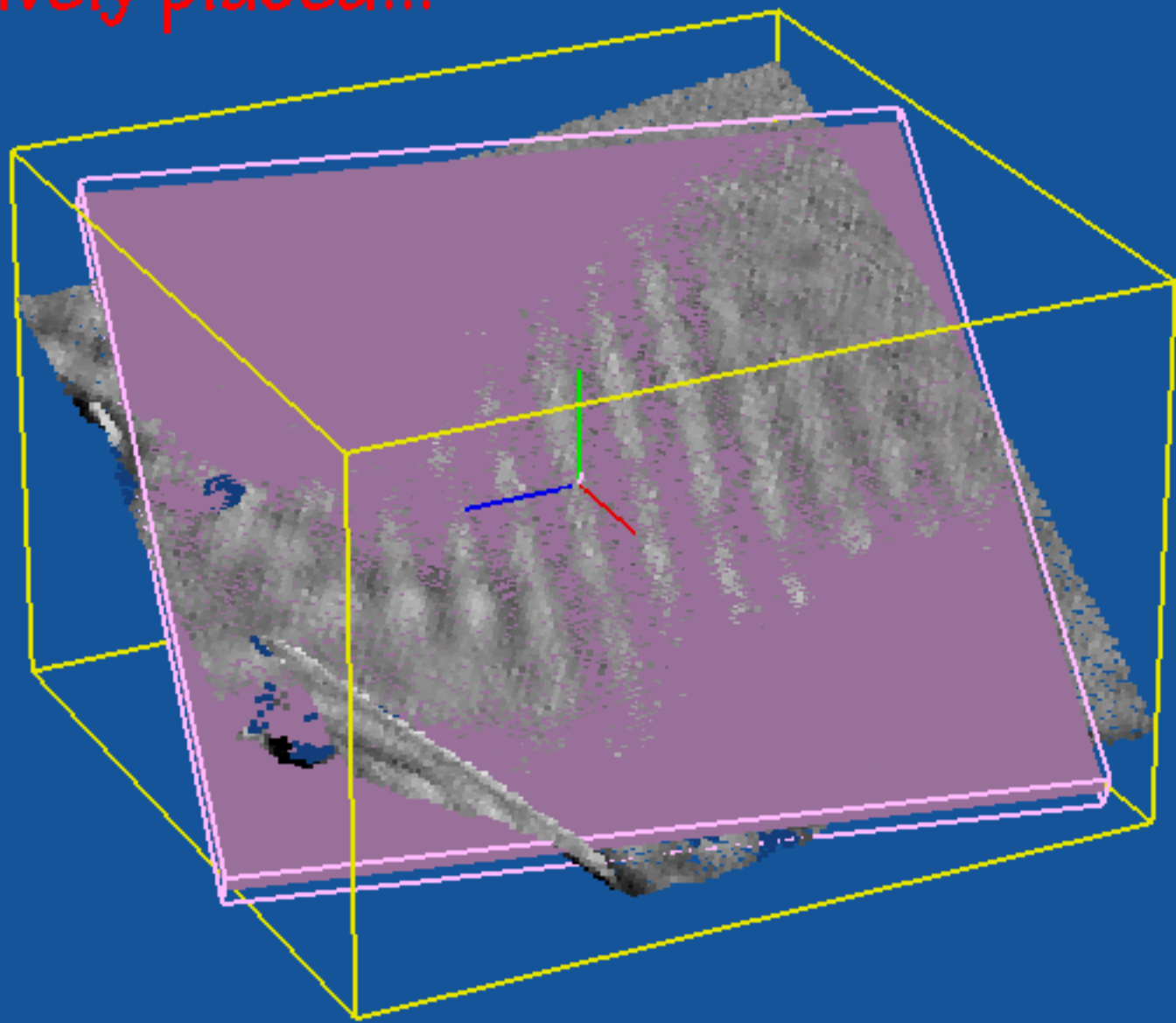
What was the size of toothed chisel that Michelangelo used on the David statue over 500 years ago?



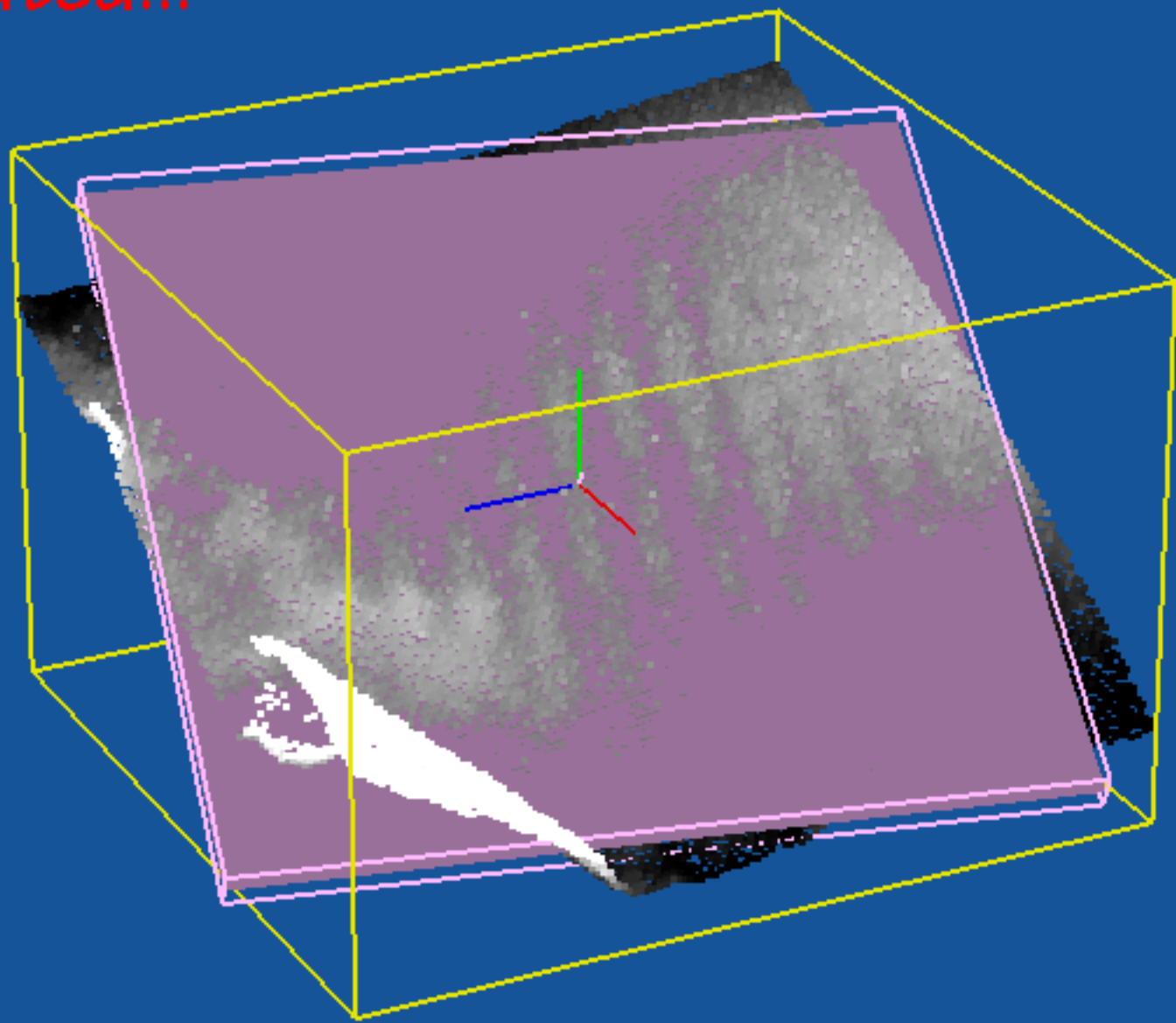
A zoomed-in view of chisel marks with curvature visualization...



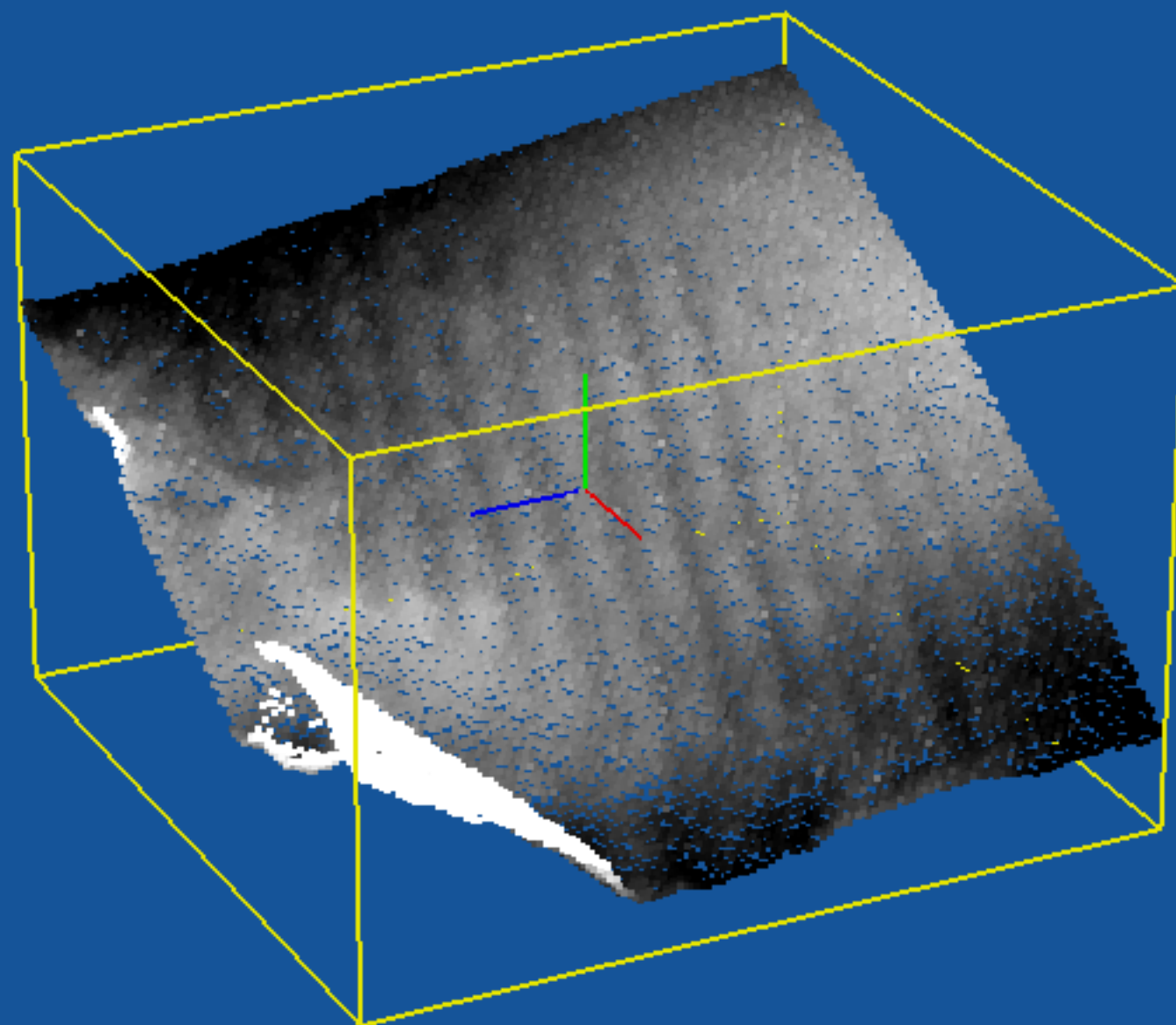
A distance measurement reference plane is interactively placed...



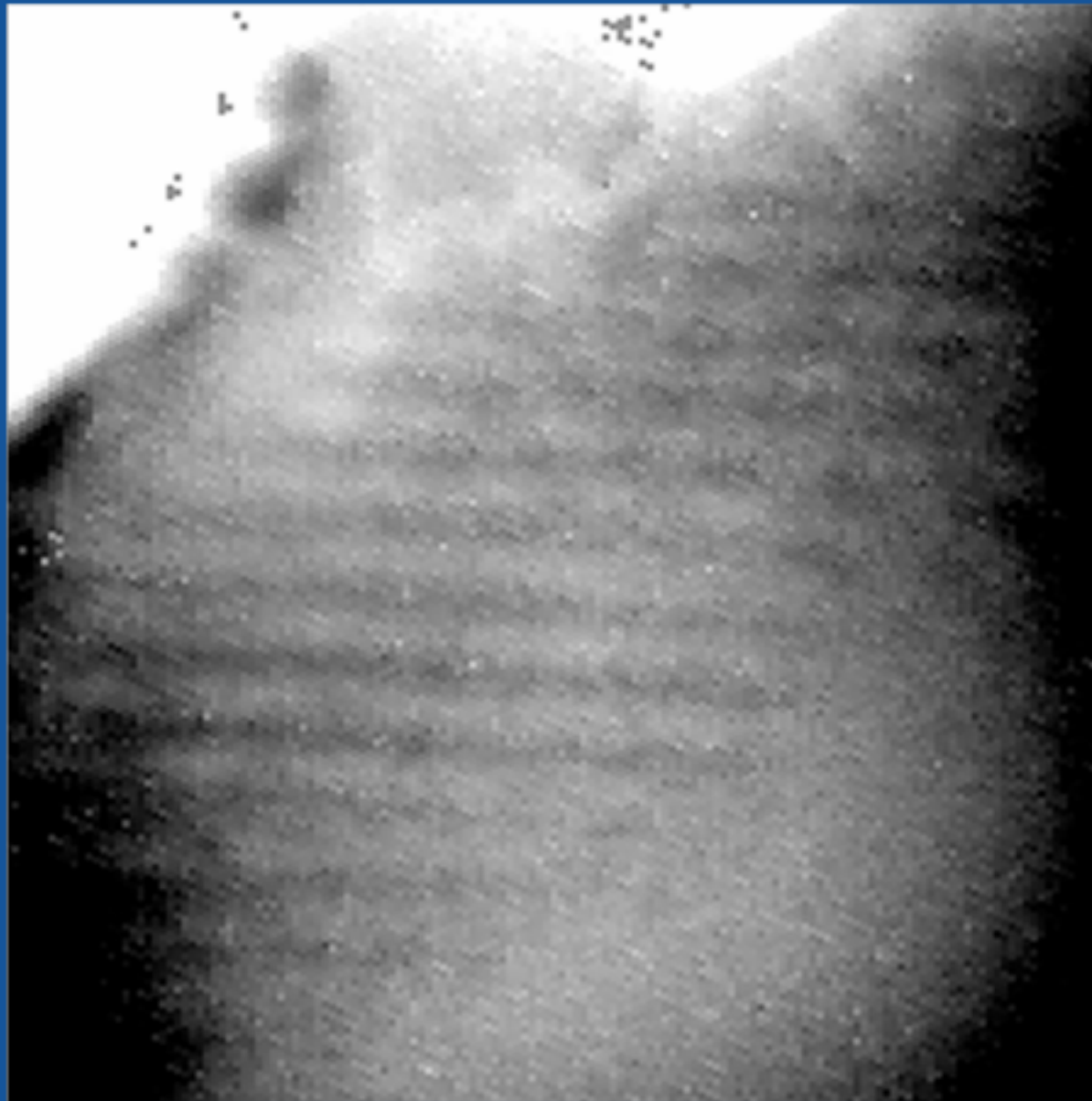
The distance from each point to the plane is calculated...



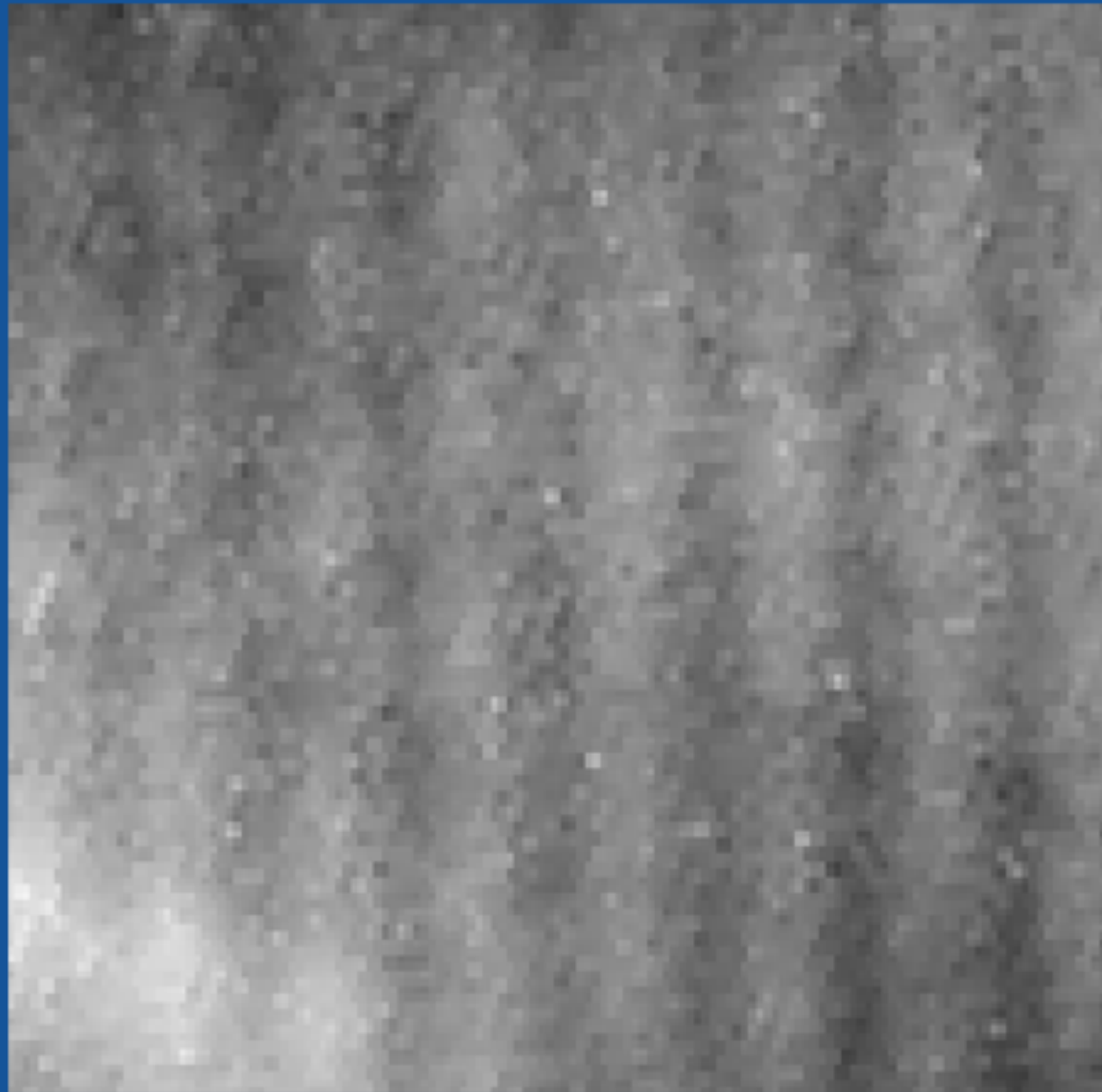
... and the distances are gray-scale shaded.



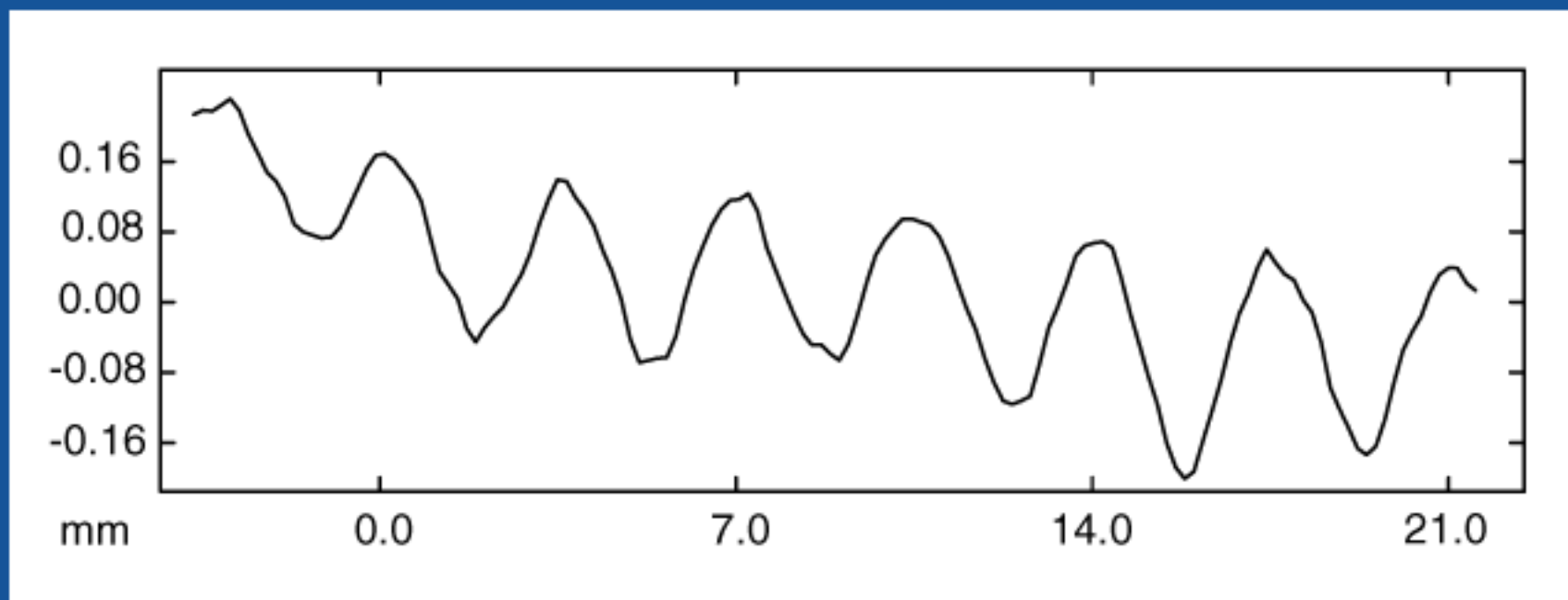
The exported 2D distance map...



Pixels extracted from the distance map...



A calibrated plot of the vertical average of pixel values reveals chisel information...



The spacing between chisel teeth is 3.5mm.
Evidence supports the use of three toothed chisel.
The chisel cut depth is only ~0.20-0.24mm.