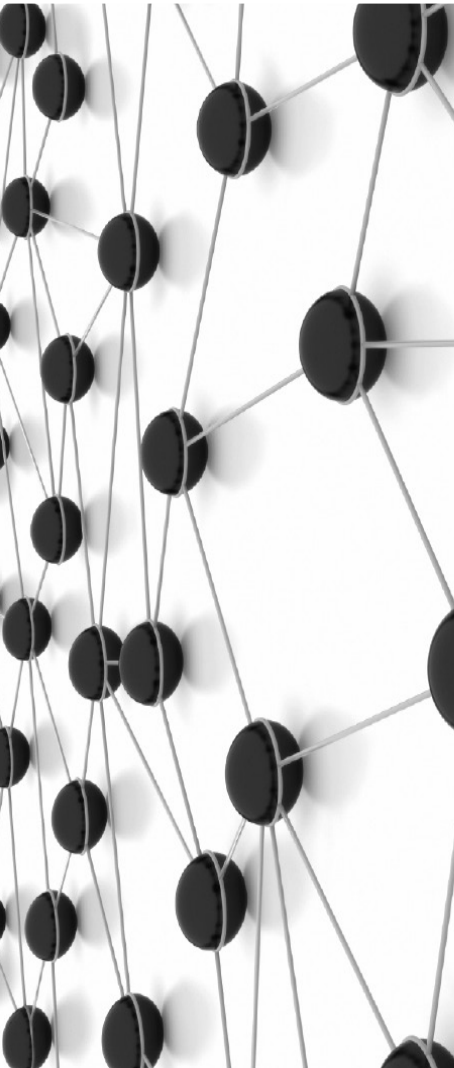




# Meet our staff



Computer Science research

59

Departmental staff

62

# Computer Science research

The Department of Computer Science has internationally recognised strengths in five major research areas. This is reflected in our research groupings. The research directions of individual academic staff members can be found on their homepages.

## Theory group

[www.cs.auckland.ac.nz/research/groups/theory](http://www.cs.auckland.ac.nz/research/groups/theory)

Theoretical computer science focuses on the abstract, mathematical nature of computation. Areas of interest are: automata theory, computational biology, computational complexity, computability and randomness, design and analysis of algorithms, and unconventional models of computation. Related research subjects include biology, combinatorics, logic, and theoretical physics.

Members of this group also belong to the Centre for Discrete Mathematics and Theoretical Computer Science (CDMTCS) and contribute to the CDMTCS report series.

### Staff member

### Homepage

Professor Cristian Calude	<a href="http://www.cs.auckland.ac.nz/~cristian">www.cs.auckland.ac.nz/~cristian</a>
Dr Michael Dinneen	<a href="http://www.cs.auckland.ac.nz/~mjd">www.cs.auckland.ac.nz/~mjd</a>
Associate Professor Alexei Drummond	<a href="http://bioinf.cs.auckland.ac.nz">bioinf.cs.auckland.ac.nz</a>
Professor Bakhadyr Khoussainov	<a href="http://www.cs.auckland.ac.nz/~bmk">www.cs.auckland.ac.nz/~bmk</a>
Associate Professor Andre Nies	<a href="http://www.cs.auckland.ac.nz/~nies">www.cs.auckland.ac.nz/~nies</a>
Dr Mark Wilson	<a href="http://www.cs.auckland.ac.nz/~mcw/blog">www.cs.auckland.ac.nz/~mcw/blog</a>

## Communication and Information Technology Research (CITR)

[www.citr.auckland.ac.nz](http://www.citr.auckland.ac.nz)

A research and development oriented group which collaborates across studies in communication, image technology, information technology, and internet technologies.

Research topics at CITR include multimedia imaging, computer vision, image and video analysis, information measurement and coding, network event detection, parallel, distributed and service-oriented architectures, mobile computing, language implementation and models. Our work spans both applied and fundamental aspects of these areas. We have two well-equipped laboratories for visualisation and photogrammetry.

### Staff member

### Homepage

Professor Reinhard Klette	<a href="http://www.cs.auckland.ac.nz/~rklette">www.cs.auckland.ac.nz/~rklette</a>
Dr S Manoharan	<a href="http://www.cs.auckland.ac.nz/~mano">www.cs.auckland.ac.nz/~mano</a>
Associate Professor John Morris	<a href="http://www.cs.auckland.ac.nz/~jmor159">www.cs.auckland.ac.nz/~jmor159</a>
Dr Radu Nicolescu	<a href="http://www.cs.auckland.ac.nz/~radu">www.cs.auckland.ac.nz/~radu</a>
Dr Ulrich Speidel	<a href="http://www.tcs.auckland.ac.nz/~ulrich">www.tcs.auckland.ac.nz/~ulrich</a>
Dr Xin Feng Ye	<a href="http://www.cs.auckland.ac.nz/~xinfeng">www.cs.auckland.ac.nz/~xinfeng</a>

## Intelligent Systems and Informatics (ISI)

[www.cs.auckland.ac.nz/research/groups/isi](http://www.cs.auckland.ac.nz/research/groups/isi)

The Intelligent Systems and Informatics (ISI) research group focuses on various theoretical and practical aspects of artificial intelligence, modern health informatics, computational biology, and applied 2D/3D image analysis, including (but not restricted to) case-based reasoning, data mining, pattern recognition, image understanding and retrieval, image-based medical diagnostics, machine learning, search, planning, and intelligent software agents. For studying versatile intelligent systems, the group has a team of Nao robots and a 3D Vision laboratory focussed on intelligent vision systems.

### Staff member

### Homepage

Dr Mike Barley	<a href="http://www.cs.auckland.ac.nz/~barley">www.cs.auckland.ac.nz/~barley</a>
Associate Professor Georgy Gimelfarb	<a href="http://www.cs.auckland.ac.nz/~georgy">www.cs.auckland.ac.nz/~georgy</a>
Dr Patrice Delmas	<a href="http://www.cs.auckland.ac.nz/~patrice">www.cs.auckland.ac.nz/~patrice</a>
Dr Patricia Riddle	<a href="http://www.cs.auckland.ac.nz/~pat">www.cs.auckland.ac.nz/~pat</a>
Associate Professor Ian Watson	<a href="http://www.cs.auckland.ac.nz/~ian">www.cs.auckland.ac.nz/~ian</a>
Professor Jim Warren	<a href="http://www.cs.auckland.ac.nz/~jim">www.cs.auckland.ac.nz/~jim</a>



## Software Engineering Research Group (SERG)

[wiki.auckland.ac.nz/display/SERG/Welcome+to+SERG](http://wiki.auckland.ac.nz/display/SERG/Welcome+to+SERG)

SERG (the Software Engineering Research Group) is a forum for research and collaboration amongst staff in the Computer Science Department working in the software engineering and applications areas. SERG comprises more than a dozen academic staff and undertakes research across a broad range of software engineering-related sub-disciplines, including, but not limited to: Software Tools and Techniques, Software Quality, Formal Methods, Human Computer Interaction, Computer Graphics ([www.cs.auckland.ac.nz/GG/](http://www.cs.auckland.ac.nz/GG/)), Scientific and Medical Visualization, Database Systems, and Computer Science Education.

Staff member	Homepage
Associate Professor Robert Amor	<a href="http://www.cs.auckland.ac.nz/~trebor">www.cs.auckland.ac.nz/~trebor</a>
Paul Denny	<a href="http://www.cs.auckland.ac.nz/~paul">www.cs.auckland.ac.nz/~paul</a>
Professor Gill Dobbie	<a href="http://www.cs.auckland.ac.nz/~gill">www.cs.auckland.ac.nz/~gill</a>
Dr John Hamer	<a href="http://www.cs.auckland.ac.nz/~j-hamer">www.cs.auckland.ac.nz/~j-hamer</a>
Dr Yun Sing Koh	<a href="http://www.cs.auckland.ac.nz/~yunsing">www.cs.auckland.ac.nz/~yunsing</a>
Dr Christof Lutteroth	<a href="http://www.cs.auckland.ac.nz/~lutteroth">www.cs.auckland.ac.nz/~lutteroth</a>
Andrew Luxton-Reilly	<a href="http://www.cs.auckland.ac.nz/~andrew-l">www.cs.auckland.ac.nz/~andrew-l</a>
Dr Beryl Plimmer	<a href="http://www.cs.auckland.ac.nz/~beryl">www.cs.auckland.ac.nz/~beryl</a>
Dr Robert Sheehan	<a href="http://www.cs.auckland.ac.nz/~robert-s">www.cs.auckland.ac.nz/~robert-s</a>
Dr Jing Sun	<a href="http://www.cs.auckland.ac.nz/~jingsun">www.cs.auckland.ac.nz/~jingsun</a>
Associate Professor Ewan Tempero	<a href="http://www.cs.auckland.ac.nz/~ewan">www.cs.auckland.ac.nz/~ewan</a>
Dr Ian Warren	<a href="http://www.cs.auckland.ac.nz/~ian-w">www.cs.auckland.ac.nz/~ian-w</a>
Dr Gerald Weber	<a href="http://www.cs.auckland.ac.nz/~gerald">www.cs.auckland.ac.nz/~gerald</a>
Dr Burkhard Wuensche	<a href="http://www.cs.auckland.ac.nz/~burkhard">www.cs.auckland.ac.nz/~burkhard</a>

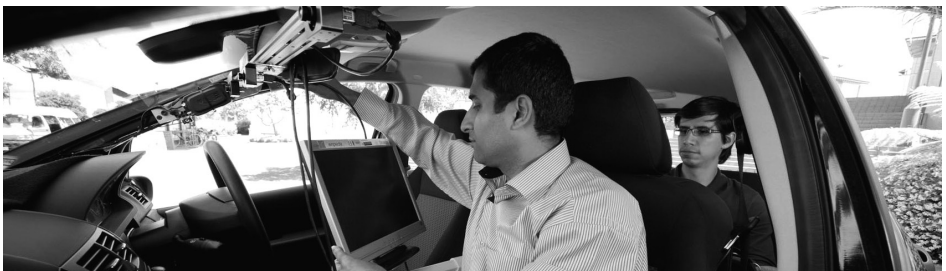
## Systems Development & Evaluation (SDE)

[www.cs.auckland.ac.nz/~brian/netwk-index.html](http://www.cs.auckland.ac.nz/~brian/netwk-index.html)

[www.cs.auckland.ac.nz/research/groups/ssg](http://www.cs.auckland.ac.nz/research/groups/ssg)

The Systems Development and Evaluation Group has a general interest in the design and measurement of performance and security, for computer systems hardware and software. Its members have special expertise in: shared memory multiprocessor systems and transactional memory; software obfuscation, software watermarking, applications of trusted computer systems; communications networks, especially the Internet and our campus network; deterministic information theory, and its use in data analysis; web engineering.

Staff member	Homepage
Associate Professor Nevil Brownlee	<a href="http://www.cs.auckland.ac.nz/~nevil">www.cs.auckland.ac.nz/~nevil</a>
Professor Brian Carpenter	<a href="http://www.cs.auckland.ac.nz/~brian">www.cs.auckland.ac.nz/~brian</a>
Professor James Goodman	<a href="http://www.cs.auckland.ac.nz/our_staff">www.cs.auckland.ac.nz/our_staff</a>
Dr Giovanni Russello	TBA
Professor Clark Thomborson	<a href="http://www.cs.auckland.ac.nz/~cthombor">www.cs.auckland.ac.nz/~cthombor</a>



# Departmental staff

Name	Room	Phone	Email
<b>Head of Department</b>			
Gillian Dobbie	303.387	83949	<a href="mailto:gill@cs.auckland.ac.nz">gill@cs.auckland.ac.nz</a>
<b>Academic</b>			
Robert Amor	303.487	83068	<a href="mailto:trebor@cs.auckland.ac.nz">trebor@cs.auckland.ac.nz</a>
Michael Barley	303.394	86133	<a href="mailto:barley@cs.auckland.ac.nz">barley@cs.auckland.ac.nz</a>
Nevil Brownlee	303.590	88941	<a href="mailto:n.brownlee@auckland.ac.nz">n.brownlee@auckland.ac.nz</a>
Cristian Calude	303.575		<a href="mailto:cristian@cs.auckland.ac.nz">cristian@cs.auckland.ac.nz</a>
Ann Cameron	303.594	84947	<a href="mailto:ann@cs.auckland.ac.nz">ann@cs.auckland.ac.nz</a>
Angela Chang	303.585	86620	<a href="mailto:angela@cs.auckland.ac.nz">angela@cs.auckland.ac.nz</a>
Patrice Delmas	303.391	83780	<a href="mailto:patrice@cs.auckland.ac.nz">patrice@cs.auckland.ac.nz</a>
Paul Denny	303.465	87087	<a href="mailto:paul@cs.auckland.ac.nz">paul@cs.auckland.ac.nz</a>
Michael Dinneen	303.579	87868	<a href="mailto:mjd@cs.auckland.ac.nz">mjd@cs.auckland.ac.nz</a>
Bob Doran	303.567	88754	<a href="mailto:bob@cs.auckland.ac.nz">bob@cs.auckland.ac.nz</a>
Alexei Drummond	303.379	88298	<a href="mailto:alexei@cs.auckland.ac.nz">alexei@cs.auckland.ac.nz</a>
Adriana Ferraro	303.592	87113	<a href="mailto:adriana@cs.auckland.ac.nz">adriana@cs.auckland.ac.nz</a>
Mark Gahegan	303.492	81891	<a href="mailto:m.gahegan@auckland.ac.nz">m.gahegan@auckland.ac.nz</a>
Georgy Gimel'farb	303.389	86609	<a href="mailto:georgy@cs.auckland.ac.nz">georgy@cs.auckland.ac.nz</a>
James Goodman	303.591	88752	<a href="mailto:goodman@cs.auckland.ac.nz">goodman@cs.auckland.ac.nz</a>
John Hamer	303.491	88758	<a href="mailto:j.hamer@cs.auckland.ac.nz">j.hamer@cs.auckland.ac.nz</a>
Bakh Khousainov	303.581	85120	<a href="mailto:bmks@cs.auckland.ac.nz">bmks@cs.auckland.ac.nz</a>
Reinhard Klette	723.TBA	86625	<a href="mailto:r.klette@auckland.ac.nz">r.klette@auckland.ac.nz</a>
Christof Lutteroth	303.494	84478	<a href="mailto:lutteroth@cs.auckland.ac.nz">lutteroth@cs.auckland.ac.nz</a>
Andrew Luxton-Reilly	303.479	85654	<a href="mailto:andrew@cs.auckland.ac.nz">andrew@cs.auckland.ac.nz</a>
S. Manoharan	723.TBA	86837	<a href="mailto:mano@cs.auckland.ac.nz">mano@cs.auckland.ac.nz</a>
John Morris	731.320	88744	<a href="mailto:j.morris@auckland.ac.nz">j.morris@auckland.ac.nz</a>
Radu Nicolescu	723.TBA	86831	<a href="mailto:r.nicolescu@auckland.ac.nz">r.nicolescu@auckland.ac.nz</a>
Andre Nies	303.565	86645	<a href="mailto:andre@cs.auckland.ac.nz">andre@cs.auckland.ac.nz</a>
Beryl Plimmer	303.483	82285	<a href="mailto:beryl@cs.auckland.ac.nz">beryl@cs.auckland.ac.nz</a>
Pat Riddle	303.392	87093	<a href="mailto:pat@cs.auckland.ac.nz">pat@cs.auckland.ac.nz</a>
Giovanni Russello	303.TBA		
Robert Sheehan	303.488	88814	<a href="mailto:r.sheehan@auckland.ac.nz">r.sheehan@auckland.ac.nz</a>
Ulrich Speidel	723.TBA	85282	<a href="mailto:ulrich@cs.auckland.ac.nz">ulrich@cs.auckland.ac.nz</a>
Jing Sun	303.481	82286	<a href="mailto:j.sun@cs.auckland.ac.nz">j.sun@cs.auckland.ac.nz</a>
Ewan Tempero	303.493	83765	<a href="mailto:ewan@cs.auckland.ac.nz">ewan@cs.auckland.ac.nz</a>
Jim Warren	730-357	86422	<a href="mailto:jim@cs.auckland.ac.nz">jim@cs.auckland.ac.nz</a>
Ian Watson	303.393	88976	<a href="mailto:ian@cs.auckland.ac.nz">ian@cs.auckland.ac.nz</a>
Gerald Weber	303.485	88114	<a href="mailto:g.weber@cs.auckland.ac.nz">g.weber@cs.auckland.ac.nz</a>
David Welch	303.365	TBA	
Mark Wilson	303.588	86643	<a href="mailto:mcw@cs.auckland.ac.nz">mcw@cs.auckland.ac.nz</a>
Burkhard Wuensche	303.490	83705	<a href="mailto:burkhard@cs.auckland.ac.nz">burkhard@cs.auckland.ac.nz</a>
Xinfeng Ye	303.589	85752	<a href="mailto:xinfeng@cs.auckland.ac.nz">xinfeng@cs.auckland.ac.nz</a>

Name	Room	Phone	Email
<b>Administrative</b>			
Heather Armstrong (Manager)	303.383	82232	heather@cs.auckland.ac.nz
Yeo Jin Jo	723.TBA	86627	y.jo@auckland.ac.nz
Cynthia Qu	303.390	83073	c.qu@auckland.ac.nz
Patricia Rood	303.388	85720	p.rood@auckland.ac.nz
Sithra Sukumaar	303.384	85857	sithra@cs.auckland.ac.nz
Robyn Young	303.384	82930	robyn@cs.auckland.ac.nz
<b>Research &amp; Teaching IT Support Staff</b>			
Aaliya Ahmed	303.395	89750	aaliya@cs.auckland.ac.nz
Habib Naderi	303.395	82080	habib@cs.auckland.ac.nz
Walter Xie	303.376		dxie0041@cs.auckland.ac.nz
Wannes van der Mark (Team Leader)	TBA		
<b>Honorary Staff Members</b>			
Peter Fenwick	peter.f@cs.auckland.ac.nz		
Hans Guesgen	h.w.guesgen@massey.ac.nz		
Peter Gutmann	p.gutmann@auckland.ac.nz		
Hermann Maurer	h.maurer@auckland.ac.nz		
<b>Research Fellows</b>			
Remco Bouckaert	303.367	35506	rbou019@cs.auckland.ac.nz
Josef Heled	303.367	35506	jhel002@cs.auckland.ac.nz
<b>Postdoctoral Fellows</b>			
Simon Greenhill	sgre063@cs.auckland.ac.nz		
Yun Sing Koh	ykoh011@cs.auckland.ac.nz		

For further staff information, see our web directory at [www.cs.auckland.ac.nz/our\\_staff](http://www.cs.auckland.ac.nz/our_staff)

**303** is the department's main building at the City campus

**723** is the department's main building at the Tamaki campus. (Subject to change.)

