

# Using Game Engine Technology for Virtual Environment Teamwork Training

Stefan Marks  
Auckland University of  
Technology, New Zealand  
stefan.marks.ac@gmail.com

John Windsor  
The University of Auckland,  
New Zealand  
j.windsor@auckland.ac.nz

Burkhard Wünsche  
The University of Auckland,  
New Zealand  
b.wuensche@auckland.ac.nz

## ABSTRACT

The use of virtual environments (VE) for teaching and training is increasing rapidly. A particular popular medium for implementing such applications are game engines. However, just changing game content is usually insufficient for creating effective training and teaching scenarios. In this paper, we discuss how the design of a VE can be changed to adapt it to new use cases. We explain how new interaction principles can be added to a game engine by presenting technologies for integrating a webcam for head tracking. This enables head-coupled perspective as an intuitive view control and head gestures that are mapped onto the user's avatar in the virtual environment. We also explain how the simulation can be connected to behavioural study software in order to simplify user study evaluation. Finally we list problems and solutions when utilising the free Source Engine Software Development Kit to design such a virtual environment. We evaluate our design, present a virtual surgery teamwork training scenario created with it, and summarize user study results demonstrating the usefulness of our extensions.

**Keywords:** Serious Game, Source Engine, Medical Teamwork Training, Head Tracking, Non-Verbal Communication, Head-Coupled Perspective

## 1 INTRODUCTION

In recent years, virtual environments (VEs) have become increasingly popular due to technological advances in graphics and user interfaces [MSL<sup>+</sup>09]. One of the many valuable uses of VE is teamwork training. The members of a team can be located wherever it is most convenient for them (e.g., at home) and solve a simulated task in the VE collaboratively, without physically having to travel to a common simulation facility. Medical schools have realised this advantage and, for example, created numerous medical simulations within Second Life or similar VEs [DPH<sup>+</sup>09].

To implement a VE, the developer has to choose between three possibilities:

1. To use a completely implemented commercial or free VE solution like Second Life [Lin10]. This has the advantage of being able to completely focus on content creation instead of having to deal with technical implementation questions and problems. However, the disadvantage is that these frameworks can-

not easily be extended with additional functionality required for a specific simulation scenario.

2. To build a VE from scratch. This enables complete freedom in the design and usability of the VE, but significantly extends development time.
3. To use a simulation framework that can be flexibly extended to account for special design requirements, but already provides a solid foundation of functionality to achieve a quick working prototype.

Whereas the first two options are located at the opposite extremes of the spectrum, the last option is located between these extremes in terms of development flexibility and rapid prototyping. A game engine, the underlying component of computer games, can be used as such a framework. This is the principle behind "serious games": To use the technology of computer games, e.g., graphics, sound, physical simulation, multi-user support, but to replace and adapt the original content to build "serious" applications, e.g., for education, training, or simulation.

The literature provides several examples of studies with simulation environments based on game engines, e.g., [TSHW08], [MRL<sup>+</sup>06], [ST09]. For an extended review of serious games, see [SJB07].

However, rarely does the reader find information discussing design options, the advantages and disadvantages of tools such as game engines, and how to use them effectively and integrate new functionalities. This makes it difficult for researchers to extend existing simulations or create new ones. One example of the few exceptions is the publication of Ritchie, Lindstrom, and

Permission to make digital or hard copies of all or part of this work for personal or classroom use is granted without fee provided that copies are not made or distributed for profit or commercial advantage and that copies bear this notice and the full citation on the first page. To copy otherwise, or republish, to post on servers or to redistribute to lists, requires prior specific permission and/or a fee.

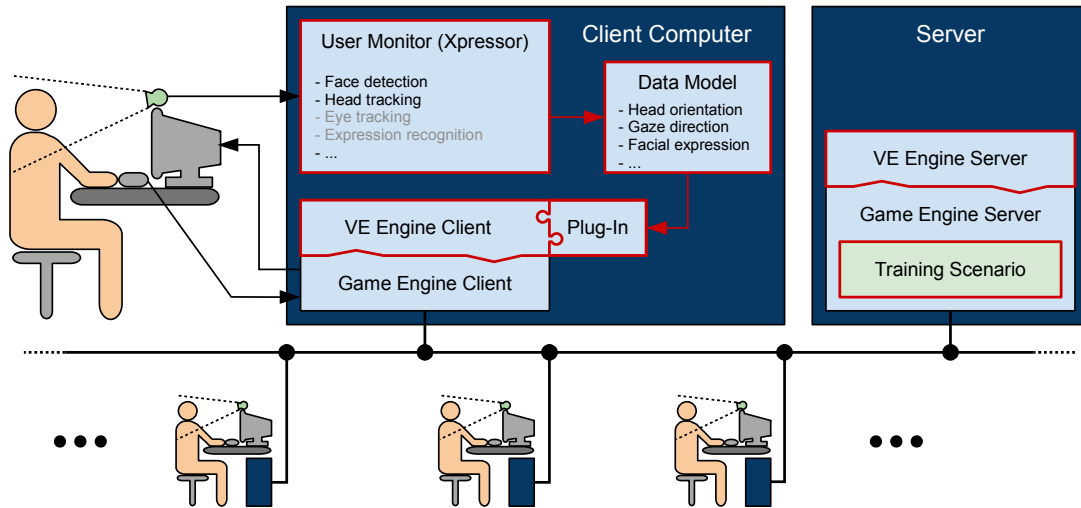


Figure 1: The functional blocks of the simulation framework

Duggan, where not only the used tools for the development process but also source code details are provided [RLD06].

We have created a VE for medical teamwork training which provides additional control mechanisms by using a webcam to capture the head movement of the user. This head movement is decomposed into the translational part which is used for head-coupled perspective (HCP), and the rotational part which is used to control head gestures of the user’s avatar to convey non-verbal communication cues. The results of our user studies show that HCP improves the usability of the VE as it introduces an intuitive view control metaphor that even inexperienced users were able to master within seconds. In addition, tracking-based head gesture control of the avatar improved the perceived realism of the simulation [MWW11].

This paper provides insight into the design of game engines and their modification for advanced “serious games” applications. In particular we explain how new user interface devices can be integrated. In our discussions, we use the Source Engine [Val07] as an example, which, at the time of the survey, fulfilled most of our simulation requirements: good graphical and animation capabilities, availability of an Software Development Kit (SDK) and developer tools, and reliable synchronisation of physically simulated objects among multiple clients. The details of the selection process of a suitable engine can be found in [MWW07].

Section 2 presents the design of our VE framework. In Section 3, we describe the details of the implementation. A summary of the results of our user studies conducted with the framework are then presented and discussed in Section 4, and we finish with the conclusion in Section 5.

## 2 DESIGN

The goal of the research described in this paper is to utilise a game engine to implement a virtual environment for surgical teamwork training. An important component in teamwork is non-verbal communication, such as head gestures, which we capture with a webcam and then map onto avatars in the virtual environment. In addition we need an intuitive method for view control, since most surgical procedures require the surgeon to use both hands for instruments. We therefore decided to implement HCP using webcam input. HCP changes the view of the VE based on the movements of the user’s head position in front of the monitor. The implementation of these additional hardware components and control metaphors is also part of this paper.

Realising our simulation scenario requires changing the game content, gameplay, and integration of webcam input to control game engine parameters. Figure 1 gives an overview of the architecture of the resulting system. The sections marked in red were developed, extended, or modified for the implementation. Figure 2 shows a screenshot of the final VE for teamwork training simulations.

The simulation is run on a central server that all users connect to with their client computers. The server as well as the clients run their part of the VE engine, being constructed on top of the Source Engine. It is important to distinguish between the terms “game engine” referring to components of the simulation framework that are parts on the Source Engine itself and therefore cannot be altered, and “VE engine” referring to components that are based on the Source SDK and have been altered to create a VE with new features and interactions.

The original game content on the server is replaced by the teamwork training scenario. This includes virtual



Figure 2: Screenshot of the final surgical teamwork simulator *MedVE* created from the original deathmatch game code

rooms, objects, instruments, sounds, textures, 3D models, etc.

On each client, an additional program, called *Xpressor*, is running, using the input from the webcam for tracking the user’s head and face. The tracking information is sent in the form of a specific data model (see Section 3.3) to a plug-in of the VE engine. By using an external tracking program and the plug-in architecture, it is easily possible to exchange these components later with more advanced ones, without having to modify the actual VE engine.

The translational head tracking information is used to control the view “into” the VE. This so called head-coupled perspective (HCP) enables intuitive control, such as peeking around corners by moving the head sideways, or zooming in by moving the head closer to the monitor.

The rotational head tracking information is used to control the head rotation of the user’s avatar. That way, other users in the VE can see head movement that is identical to the movement actually performed physically by the user, such as nodding, shaking, or rolling of the head.

In addition, data from face tracking can be used to detect facial expressions and transfer them onto the user’s avatar. Bartlett et al [BLWM08], for example, present a system that recognises a large set of movements of facial keypoints, such as lip corners, eyebrows, or blinking. Using a simpler set of movements and keypoints, the authors of [QCM10] created a virtual mirror, where an avatar mimics smile, gaze and head direction, and an opened/closed/smiling mouth of the user in realtime. In our implementation, we use a non-commercial version of the face tracking library *faceAPI* which does *not* include the detection of facial expressions.

## 3 IMPLEMENTATION

In the following three sections, we will explain the implementation of the three important components of this framework: the virtual environment, the user monitor *Xpressor*, and the data model.

### 3.1 Virtual Environment

#### 3.1.1 Steam Client

The modification of a game that utilises the Source Engine starts off with *Steam*, a client software of the manufacturer Valve, designed to enable the user to buy games online, download and install them, and to keep the games updated when bugfixes or extras are released.

#### 3.1.2 Creating a New Project

The Source SDK is available to anybody who has purchased at least one game that utilises the Source Engine, e.g., *Half-Life 2*, *Team Fortress 2*, *Portal*. With the help of the *Steam* client, the SDK is easily downloaded and installed like any other game. The SDK gives a good starting point to experiment with the code and the game engine, and to start modifying certain aspects of the game. Several pages on the Valve Developer Community (VDC) website give additional hints and ideas, for example the “My First Mod” tutorial [Val10b].

#### 3.1.3 Version Control

Directly after creating and compiling the modification project, we put the code under version control, using Subversion [The11], as described in [Val10e]. That way, we were able to update the code with changes that were applied to the SDK later in the development process.

#### 3.1.4 Concepts of the Source Engine

Gaining an understanding of the design and functionality of the Source Engine was a very time-consuming process. At first sight, the developer website creates an impression of a thorough documentation. But when it comes down to details and specific questions, this documentation reveals large gaps and provides outdated or even contradictory information.

The majority of work necessary for understanding the Source Engine was to read through the provided code of the SDK, ignore several inconsistently implemented naming conventions, insert execution breakpoints, trace method calls through several class inheritance levels, and much more.

Good documentation and a well structured codebase is important for any game engine that is to be the foundation of a simulation. Without these prerequisites, a lot of time is spent on deciphering the inner workings of the underlying code or on figuring out how to achieve

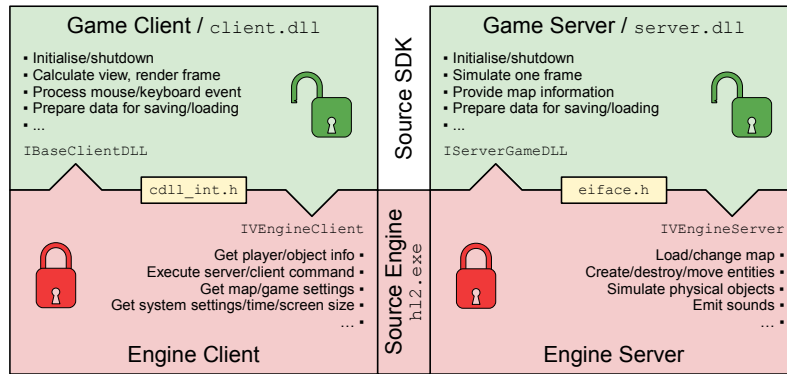


Figure 3: Boundaries between the Source SDK and the Source Engine

a certain functionality, instead of implementing the essential parts of the program.

In the following sections, we will present some of the major concepts of the Source Engine that played an important role in the development and modification phase.

### 3.1.5 Game Engine/SDK Boundaries

When a multi-user Source Engine game is started, four program parts are involved (see Figure 3):

- The game engine (`hl2.exe`) is executed, consisting of the server
- and the client part.

Depending on whether the user chooses to start a new game server or to connect to an existing game server, the engine then activates

- either the game server dynamic link library (DLL) `server.dll`
- or the game client DLL `client.dll`.

The game engine itself cannot be modified at all. No source code of the inner workings of the engine is given.

The SDK contains header files with interface definitions for the server (`eiface.h`) and the client part (`cdll_int.h`) of the engine. These interfaces provide access to very basic entity and resource management, and to the sound, graphics, and system functions of the engine.

It is possible to build a game completely from scratch, using only those header files. However, the SDK delivers a comprehensive set of classes and methods that, in its entirety, already constitutes a complete game. Starting from this point, the developer can now modify, remove or add custom parts to this framework. The advantage is rapid prototyping, as long as the result does not differ much from the original kind of game.

However, with every additional change that is necessary to get away from the original game towards the final product, it gets more and more difficult to implement the changes. Some of these difficulties are described further down in this section.

### 3.1.6 Client-Server Architecture

Games and VEs for multiple users are mostly constructed using a client/server architecture [Val10d]. The basic principle of client and server communication of a game based on the Source Engine is shown in Figure 9.

The server is mainly responsible for running the simulation, updating the position, orientation, and speed of animated and physically simulated objects. In regular intervals, e.g., every 33 ms (=30Hz), it receives compressed command packets from the clients, carrying information about mouse movement, keyboard input, and other events that the users on the clients have triggered. These command packets are unpacked, checked, and their effect is taken into consideration for the simulation: avatars move, objects are picked up or released, sounds are played, etc. After each simulation step, the new state of all objects and avatars is sent to the clients which can in turn update the changed state of the world on the screen.

During runtime, each simulated object in the VE exists in two versions: One version, the “server entity”, is managed on the server, and is actively simulated. The second version, the “client entity”, exists on each client and is kept in sync with the server version by network variables [Val10c].

These variables automatically take care of maintaining a synchronous state between the server and all clients. As soon as a variable value changes, its value is marked for transmission on the next update data packet from the server to the clients. To conserve bandwidth, the values are being compressed and only sent when they have changed. This mechanism is important to enable fluid gameplay on low-bandwidth connections, e.g., dial-up.

### 3.1.7 Prediction

The fact that clients have to wait for a data packet from the server to show the updated world has a major drawback: Users would experience a noticeable delay to their actions, especially on slow network connections.

To avoid this delay and to provide a fast and responsive game, the client predicts the response of the server

and uses this prediction for an immediate response to user input. When the client later receives the real server response, it corrects the prediction, if necessary.

For the prediction, the client needs to have the same rules and simulation routines as the server. In the SDK, this is implemented by a major duplication of code for the server and client entity representations. However, instead of physical file duplication, shared code is contained in shared source files (e.g., `physics_main_shared.cpp`) that are included in both, client and server projects.

### 3.1.8 Stripping Down the Engine

The next big step, after understanding the engine, was to strip the project code of unnecessary classes and entities, e.g., weapons and the player health indicator. This step proved very difficult due to numerous interdependencies within the code. Weapon related code especially, was very deeply integrated into basic classes. Removal of one class file would break several other classes. It required a lot of re-compilation passes and uncommenting of large code sections until the code would compile again.

### 3.1.9 Changing the Interaction

One major change in the original SDK deathmatch game style was the primary interaction type. After we had removed all weapons, we wanted to assign the left mouse button click to grabbing and releasing of physical objects, and to triggering of interactions with objects, e.g., buttons or patients.

This seemingly simple change required a lot of reworking in the code to create access methods to the objects that the user interacts with, to enable users to take objects from each other, and to log all of those interaction events.

On a visual level, we wanted the avatars to grab an object with the right hand as soon as the user would pick it up. This can be implemented with inverse kinematics (IK): When the target position of the hand is given, IK calculates the position of the animating bones of the arm so that the attached hand reaches that position exactly.

The Source Engine is capable of IK, as can be seen in *Half-Life 2 – Episode 2*, where a certain tripod character always touches uneven ground with all three feet. However, the Source SDK website states that in multiplayer games, IK is not activated due to difficulties and performance reasons on the server [Val10a].

Our queries in the developer forums resulted in a confirmation that the engine is capable of IK, but nobody was able to give an answer on how to do it.

For this reason, grabbed objects “float” in front of the avatar while they are carried around. However, this flaw

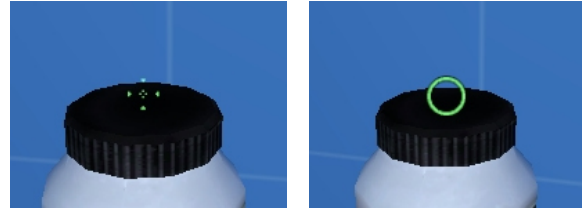


Figure 4: Different styles for the viewpoint indicator

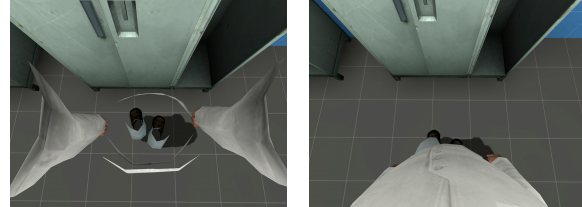


Figure 5: Creating body awareness for the avatar



Figure 6: Examples of a room with the original Source SDK textures (left) and the custom textures for the user studies

in realism did not distract the participants of the user studies. Some of them even made fun of the strange appearance, mentioning “Jedi-powers”.

### 3.1.10 Changing the User Interface

Together with the change of the interaction style, we redesigned parts of the user interface. In the original SDK, the centre of the screen is marked by a crosshair, indicating the point where the weapon would be fired at.

With the removal of any weapon related code, the crosshair turned into a viewpoint indicator. After some experiments with different indicator styles, We chose a segmented circle that turns green as soon as an interactive object is in focus, and closes when a physical object is grabbed and held (see Figure 4). Such a circle has an improved visibility over, e.g., a simple point. It is also less associated with weapons than, e.g., a crosshair.

The original weapon crosshair was simply painted at the centre of the screen. With the inclusion of head tracking however, we also had to consider a position offset caused by the avatar head rotation and translation.

### 3.1.11 Body Awareness

In the original SDK, the user cannot see the avatar’s own body when looking down, as shown in the left image of Figure 5.

To create body awareness, we had to change several aspects:



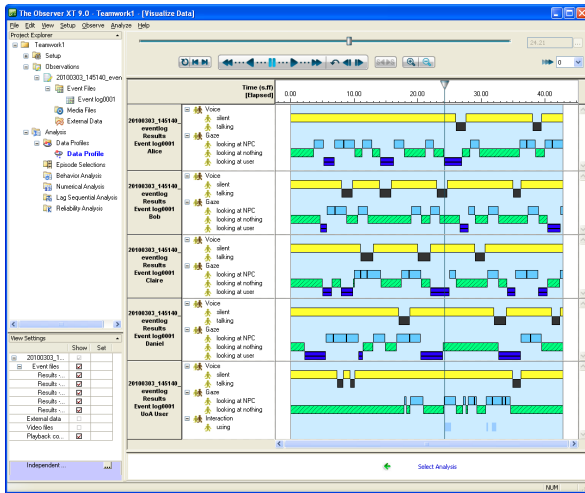


Figure 7: *Observer XT* visualising interactions, movements, and talk patterns of a teamwork simulation

1. The body model has to be drawn, even when the game is in first-person view.
2. The camera viewpoint has to be synchronised with any animation of the body model, e.g., walking, standing idle. To achieve this, the camera position is constantly updated with the position of the eyeballs of the avatar model.
3. When looking up or down, the vertical head rotation cannot simply be translated into a camera rotation, because in that case the user would be able to see the inside of the head or the body (see left screenshot in Figure 5). We added a forwards translation to the camera that is slightly increased when the user looks up or down. Together with correct settings for the near and far plane of the camera frustum, this creates a realistic body awareness without literally having “insight” into the avatar model.

We had planned to use IK to visualise the head movement caused by head tracking. Physical, translational head movement of the user would then have resulted in identical translational upper body and head movement of the avatar. As a result, an avatar would lean forward or sideways in sync with the user who is controlling it. However, we were not able to implement this feature due to the insufficient documentation of the IK features of the engine.

### 3.1.12 Textures

The original textures of the SDK are designed for creating games that are set in a post-war era. These textures are, in general, worn down and dull, creating a depressive feeling in all maps created with them.

We replaced some of the wall, floor, and ceiling textures with synthetic textures that look like clean tiles.

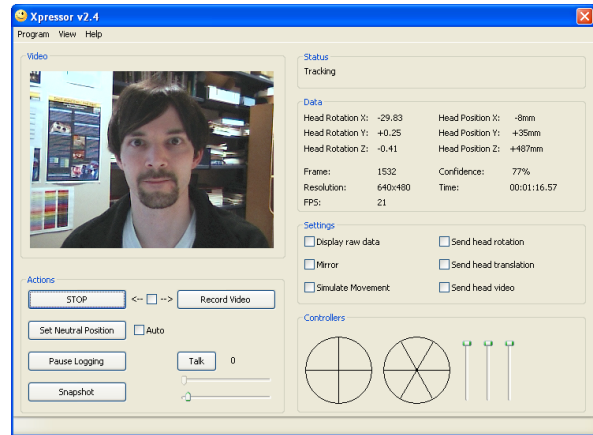


Figure 8: Screenshot of the user interface of *Xpressor*

The regular style of the tile textures creates a very organised, sterile look. The realism of the rooms created with these textures could be increased further by using photos of real rooms. However, this was not a priority for our research, but it is an indicator of the complexity of designing and creating realistic environments.

### 3.1.13 Data Logging

We also implemented a data logging module that records user head movement, user interactions, and gaze targets and duration. The generated logfiles enable us to analyse individual and teamwork scenarios for statistical evaluations. An additional benefit, especially for teamwork assessment, is the ability of the logfiles to be imported into external assessment tools, like the behavioural analysis tool *Observer XT* shown in Figure 7 [No10]. This import eliminates the need for human assessors to observe a teamwork recording again to create a list of actions and behaviours. All this information is already present in the VE engine during the simulation and can therefore be directly exported into the logfile.

## 3.2 Xpressor

*Xpressor* is the program that we developed for encapsulating the head tracking library *faceAPI*. The program communicates bidirectionally with the VE engine, using two local user datagram protocol (UDP) connections.

The communication with the VE engine occurs through a plug-in, as shown in Figure 1. The Source SDK has certain settings and abstraction layers that prevent the direct use of networking functions and several other operating system related functions. However, it is possible to load plug-in DLLs and to exchange data with them. We therefore created a simple *Xpressor* plug-in that is loaded in the beginning, accepts the UDP connection, and relays the following data into the VE engine:

- translational and rotational tracking data,

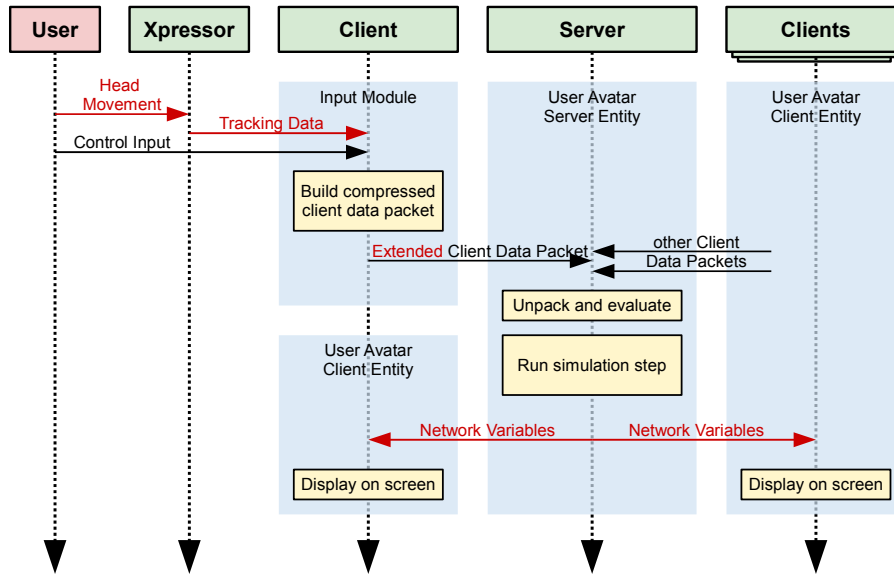


Figure 9: Data exchange between *Xpressor*, the VE clients, and the server

- a low resolution video stream,
- information regarding whether the user is speaking or not, and
- values to control the facial expression of the avatar.

The video stream is helpful for the user e.g., to adjust his or her position at the beginning of a simulation. To conserve bandwidth, the video is resized to  $100 \times 60$  pixel, converted to 4bit greyscale, and transmitted with 10fps via a separate UDP connection.

The program also monitors the signal strength of the connected microphone, signalling the VE engine via a flag whether the user is speaking or not. The state of this flag is determined by a simple signal energy threshold algorithm.

*Xpressor* is written in C++, using the Microsoft Foundation Classes (MFC) for the graphical user interface (GUI) (see Figure 8). For the control of the facial expression, we developed a custom circular controller interface, visualising six expression types as circle segments and the strength of the expression by the distance of the controller position from the centre of the circle.

While sitting in front of the screen, the user inadvertently shifts his or her neutral head position relative to the camera. As a result, any concept relying on an absolute position will reflect that drift in a slowly changing view of the VE. Similar to the recommendations from Sko and Gardner for games using HCP, we have implemented a configurable automatic slow adjustment of the neutral position towards the average of the measured position over several seconds [SG09]. This adjustment accommodates for the gradual change of the neutral position and rotation of the user's head. To avoid an unwanted compensation when the user is at the extreme ends of the tracking range, e.g., when looking at an ob-

ject from the side, the adjustment is reduced towards the outer regions of the tracking volume.

### 3.3 Data Model

The data model is a description of how to pack the values from head tracking and future facial expression recognition into a data structure that can be easily extended, but at the same time also easily compressed and transmitted.

Figure 9 visualises the extension in the data flow between the VE clients and server. Because of the fast local UDP connection between *Xpressor* and the client, the data is transferred uncompressed. Between the clients and the server however, bandwidth can be limited, therefore the parameters are compressed.

## 4 RESULTS

The modification of the Source Engine into a virtual environment for medical teamwork training with webcam support for HCP and head gestures was a non-trivial process due to the complexity and insufficient documentation of the engine, but allowed for rapid prototyping of early design stages.

All software outside of the VE engine, e.g., *Xpressor*, was kept modular, as well as most of the code we created to add functionality to the VE engine. This enabled us in the early stages of our experiments to easily exchange our own head tracking module by *faceAPI*.

However, features or modifications that required deep changes within the original code had to be kept close to the coding style of the SDK itself, resulting in sub-optimal program code. The latter problem might be of a different magnitude when using different game engines, e.g., Unity 3D [Uni11] that provide a more structured codebase to program against. The problems with

the complexity of the code of the Source SDK were increased by insufficient documentation. A lot of development time was spent on deciphering the code or consulting the forums and developer websites for examples to compensate for the lack of documentation. To avoid this problem, it is important to put more emphasis on the quality of the documentation and the code of a game engine when engines are considered for selection.

Content for our VE was created using the free 3D editor *Blender* [Ble11] and the tools provided by the Source Engine, e.g., the map editor *Hammer* and the character animation tool *Faceposer*. Most time during content creation was spent on figuring out ways how to simulate a specific effect or physical behaviour with the engine which is optimized for fast action gameplay, not for precise simulations. On several occasions, we had to compromise between realism and the ability of the engine to simulate a specific feature. One example is the bleeding that occurs during the surgical procedure we designed for the multi-user study. The Source Engine does not provide physically correct fluid simulation. Instead, we created a particle effect that resembles a little fountain.

We measured the “success” of the design and implementation of our VE indirectly by the user studies we conducted for our overall goal: to show improvements of usability, realism, and effectiveness of VE-based training scenarios by including camera-based non-verbal communication support and intuitive HCP-based view control.

Overall, the VE proved to be stable and intuitive to use for the participants, regardless if they were experienced in playing computer games or not. Our studies comparing manual view control against HCP showed that HCP is an intuitive and efficient way of controlling the view, especially for inexperienced users [MWW10].

For highest user comfort, it is important that the delay between physical head movement and virtual camera movement is as short as possible. Our framework was able to deliver a relatively short response time of about 100ms. However, this delay lead to participants repeatedly overshooting their view target. We suspect that the delay is a sum of several smaller delays in each processing stage of the data flow, therefore requiring several different optimisation steps for an improvement.

For our latest user study, we created a surgical teamwork training scenario and alternated between HCP and avatar control being enabled or disabled to investigate the effect of tracking-based avatar head movement on non-verbal communication within a VE. The results showed an increase in perceived realism of the communication within the environment [MWW11]. An effect on teamwork training effectiveness was not proven, but might have been masked by the experiment design. A clarification is subject to future research.

## 5 CONCLUSION

In summary, the Source Engine is suitable for rapidly developing a teamwork training VE, as long as the changes required to the original SDK code are not too major. The more functionality that is necessary for specific features of the desired VE, the more complex the coding task becomes. At a certain point, it would be infeasible to use this engine and alternative game engines would have to be considered.

However, the Source Engine proved stable and flexible enough for our medical teamwork training scenario with additional support for HCP and camera-controlled avatar head gestures. The user studies we have conducted show that these extensions are well received, and improve the usability and the perceived realism of the simulation. In addition, the digital recording of the interactions and behaviours within the VE is a valuable support for automated (e.g., with tools like *Observer XT*) as well as “manual” assessment of teamwork performance.

## 6 REFERENCES

- [Ble11] Blender Foundation. Blender, 2011. <http://www.blender.org>.
- [BLWM08] Marian Bartlett, Gwen Littlewort, Tingfan Wu, and Javier Movellan. Computer Expression Recognition Toolbox. In *Demo: 8th Int'l IEEE Conference on Automatic Face and Gesture Recognition*, 2008.
- [DPH<sup>+</sup>09] Douglas Danforth, Mike Procter, Robert Heller, Richard Chen, and Mary Johnson. Development of Virtual Patient Simulations for Medical Education. *Journal of Virtual Worlds Research*, 2(2):3–11, August 2009.
- [Lin10] Linden Research, Inc. Second Life, 2010. <http://secondlife.com>.
- [MRL<sup>+</sup>06] Brian MacNamee, Pauline Rooney, Patrick Lindstrom, Andrew Ritchie, Frances Boylan, and Greg Burke. Serious Gordon: Using Serious Games To Teach Food Safety in the Kitchen. In *Proceedings of the 9th International Conference on Computer Games: AI, Animation, Mobile, Educational & Serious Games (CGAMES06)*, November 2006.
- [MSL<sup>+</sup>09] Paul R. Messinger, Eleni Stroulia, Kelly Lyons, Michael Bone, Run H. Niu, Kristen Smirnov, and Stephen Perelgut. Virtual Worlds – Past, Present, and Future: New Directions in Social Computing. *Decision Support Systems*, 47(3):204–228, June 2009.



- [MWW07] Stefan Marks, John Windsor, and Burkhard Wünsche. Evaluation of Game Engines for Simulated Surgical Training. In *GRAPHITE '07: Proceedings of the 5th international conference on Computer graphics and interactive techniques in Australia and Southeast Asia*, pages 273–280, New York, NY, USA, December 2007. ACM.
- [MWW10] Stefan Marks, John Windsor, and Burkhard Wünsche. Evaluation of the Effectiveness of Head Tracking for View and Avatar Control in Virtual Environments. *25th International Conference Image and Vision Computing New Zealand (IVCNZ) 2010*, November 2010.
- [MWW11] Stefan Marks, John Windsor, and Burkhard Wünsche. Head Tracking Based Avatar Control for Virtual Environment Teamwork Training. In *Proceedings of GRAPP 2011*, 2011.
- [No110] Noldus Information Technology. Observer XT, 2010. <http://www.noldus.com/human-behavior-research/products/the-observer-xt>.
- [QCM10] Rossana B. Queiroz, Marcelo Cohen, and Soraia R. Musse. An extensible framework for interactive facial animation with facial expressions, lip synchronization and eye behavior. *Computers in Entertainment (CIE) - SPECIAL ISSUE: Games*, 7:58:1–58:20, January 2010.
- [RLD06] Andrew Ritchie, Patrick Lindstrom, and Bryan Duggan. Using the Source Engine for Serious Games. In *Proceedings of the 9th International Conference on Computer Games: AI, Animation, Mobile, Educational & Serious Games (CGAMES06)*, November 2006.
- [SG09] Torben Sko and Henry J. Gardner. Human-Computer Interaction — INTERACT 2009. In Tom Gross, Jan Gulliksen, Paula Kotzé, Lars Oestreicher, Philippe Palanque, Raquel Oliveira Prates, and Marco Winckler, editors, *Lecture Notes in Computer Science*, volume 5726/2009 of *Lecture Notes in Computer Science*, chapter Head Tracking in First-Person Games: Interaction Using a Web-Camera, pages 342–355. Springer Berlin / Heidelberg, August 2009.
- [SJB07] Tarja Susi, Mikael Johannesson, and Per Backlund. Serious Games — An Overview. Technical report, School of Humanities and Informatics, University of Skövde, Sweden, February 2007.
- [ST09] Shamus P. Smith and David Trenholme. Rapid prototyping a virtual fire drill environment using computer game technology. *Fire Safety Journal*, 44(4):559–569, May 2009.
- [The11] The Apache Software Foundation. Apache Subversion, 2011. <http://subversion.apache.org>.
- [TSHW08] Jeffrey Taekman, Noa Segall, Eugene Hobbs, and Melanie Wright. 3DiTeams — Healthcare Team Training in a Virtual Environment. *Simulation in Healthcare: The Journal of the Society for Simulation in Healthcare*, 3(5):112, 2008.
- [Uni11] Unity Technologies. UNITY: Unity 3 Engine, 2011. <http://unity3d.com/unity/engine>.
- [Val07] Valve Corporation. Source Engine, 2007. <http://source.valvesoftware.com>.
- [Val10a] Valve Developer Community. IK Chain, 2010. [http://developer.valvesoftware.com/wiki/\\$ikchain](http://developer.valvesoftware.com/wiki/$ikchain).
- [Val10b] Valve Developer Community. My First Mod, 2010. [http://developer.valvesoftware.com/wiki/First\\_Mod](http://developer.valvesoftware.com/wiki/First_Mod).
- [Val10c] Valve Developer Community. Networking Entities, 2010. [http://developer.valvesoftware.com/wiki/Networking\\_Entities](http://developer.valvesoftware.com/wiki/Networking_Entities).
- [Val10d] Valve Developer Community. Source Multiplayer Networking, 2010. [http://developer.valvesoftware.com/wiki/Net\\_graph](http://developer.valvesoftware.com/wiki/Net_graph).
- [Val10e] Valve Developer Community. Using Subversion for Source Control with the Source SDK, 2010. [http://developer.valvesoftware.com/wiki/Using\\_Subversion\\_for\\_Source\\_Control\\_with\\_the\\_Source\\_SDK](http://developer.valvesoftware.com/wiki/Using_Subversion_for_Source_Control_with_the_Source_SDK).